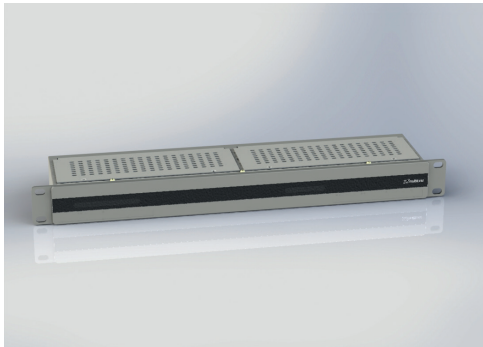


# Intelligent TX Interface

## Tech Sheet



The Intelligent Transmitter Interface (ITI) module connects to the systems 600 Ohm-pairs of transmission lines, carrying transmitter control signalling, paging call data and audio to alarm data, from a remote transmitter. One ITI is assigned to each transmitter in a system and each has a unique 2-digit identity to which it will respond, enabling individual transmitter control. The ITI will not initiate communication, it will only respond to commands addressed to it.

The ITI unit has a built-in fault reporting facility, which provides transmitter status data back to the main system. This capability may be used in conjunction with outgoing system commands, to either test the viability of a transmitter by initiating a short test transmission; or inhibiting faulty or redundant transmitters in fail-safe systems.

### Product Variants

#### IM-ITI-D

Designed for desktop, shelf, or wall mount installation to be located with a transmitter. Product supplied with 12V DC switch-mode power supply unit.

- Dimensions: 220 x 113 x 43mm (1U Rack Slot)
- Weight: 0.90kg

#### IM-ITI-R

A rack mounted option to be located with a transmitter. Product supplied with 12V DC switch-mode power supply unit.

- Dimensions: 440 x 113 x 43mm (1U Rack Slot)
- Weight: 1.00kg (Approx.)

Supplied with the ITI and a LAN Peripheral Interface (LPI) and housed in a standard 19" enclosure, designed for use with rack-mounted transmitters, such as the RPT1100 Series.

- Dimensions: 440 x 113 x 43mm (1U Rack Slot)
- Weight: 1.85kg (Approx.)

### Technical Specification

- Power Supply: 11 – 18V DC 100mA
- Multitone part no. 6603-0052
- Line Input: 600 Ohms -13dBm nominal (-25 to +10dBm)
- Line Output: 600 Ohms -13dBm nominal (-20 to +2dBm)

### Transmitter Outputs:

- All open collector outputs: Max voltage 30V, Max current 100mA
- TX O/P (Analogue): Channel A and B, Impedance: 600 Ohms, Level: 1V p-p
- DATA-TTL: Channel A and B, Level: 5V p-p
- DATA-O/C: Channel A and B (open collector)
- CHA-DIG: Channel A digital key line (open collector)
- CHA-AN: Channel A analogue key line (open collector)
- ID-GEN-KEY: ID generator key line (open collector)
- LP-MODE: Low power key line (open collector)
- A/D MODE: Analogue/Digital mode select line (open collector)
- CHB-KEY: Channel B analogue and digital key line (open collector)
- AUX Connector: Mode, Key Line and Data to RPT500 series





### Transmitter Alarm Inputs:

Fault detect inputs 1 to 5:

- Fault detect inputs have internal pull-ups to +5V, so may be driven from open collector or relay outputs in the transmitter.
- Inputs can also be driven from active outputs:
  - Low <+0.5V DC
  - High > +1V DC
  - +/- 15V max



Serial port (on Aux socket):

- RPT500 Serial Link - This will query the fault status of an RPT500 transmitter, through the RS232 port. Connection is via SK1.
- Programming - In programming mode this is used to program the ITI. Programming mode is entered by connecting the programming lead to the Aux connector.

Multitone Electronics Plc  
Multitone House  
Shortwood Copse Lane  
Basingstoke  
Hampshire, RG23 7NL, UK  
**+44 (0)1256 320292** (telephone)  
**+44 (0)1256 462 643** (fax)  
[info@multitone.com](mailto:info@multitone.com)  
[www.multitone.com](http://www.multitone.com)

This brochure is for guidance only. Products and services offered are subject to availability and may differ from those described or illustrated in this brochure as a result of changes. Specifications are subject to change without notice. Multitone Electronics plc is part of Kantone Holdings Ltd, a member of the Champion Technology group of companies.

Registered office: Multitone Electronics plc, Shortwood Copse Lane, Kempshott, Basingstoke, Hampshire, RG23 7NL  
Registered in England No. 256314

Literature No: MPL047

